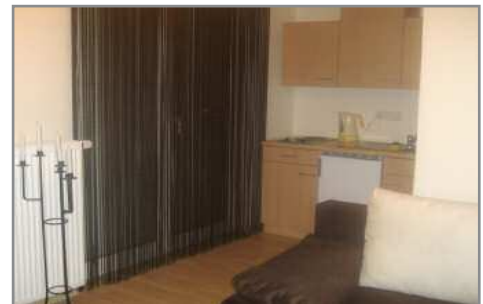
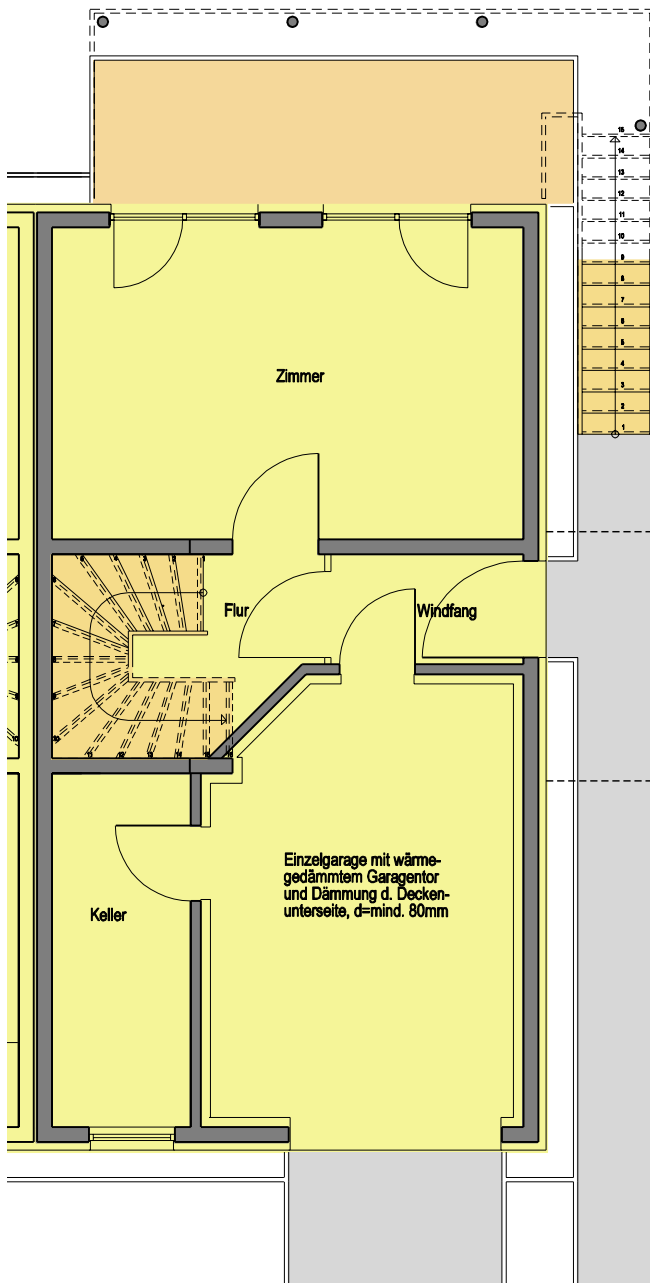
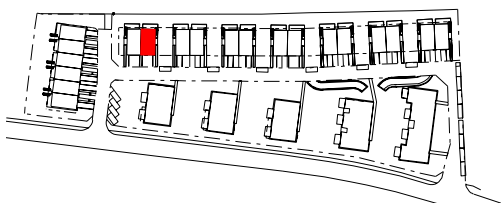


Grundrissplan: ERDGESCHOSS



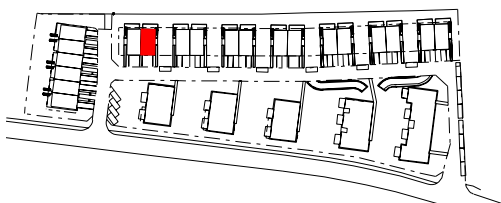
| | |
|---------------------------|----------------------------|
| WOHNFLÄCHE EG | |
| Zimmer | 20,35 m ² |
| Windfang | 2,39 m ² |
| Flur | 2,65 m ² |
| Terrasse 9,44 x 0,25 | = 2,36 m ² |
| GESAMT | 27,75 m² |
| NEBENNUTZFLÄCHE EG | |
| Keller | 6,80 m ² |
| Einzelgarage | 17,42 m ² |
| GESAMT | 24,22 m² |



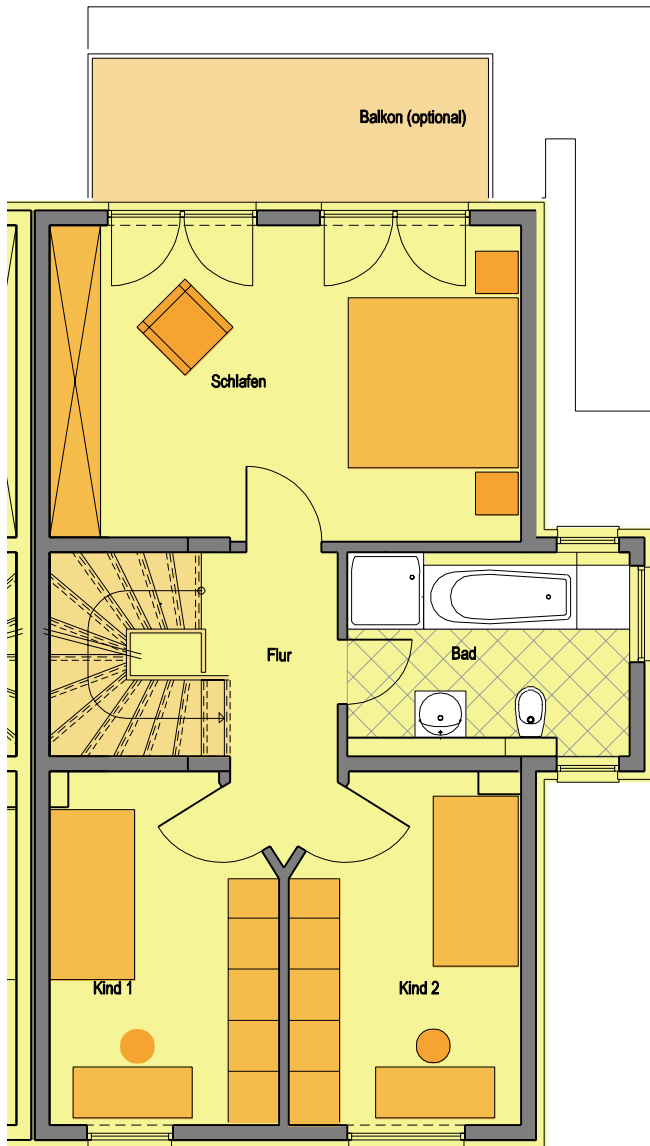
Grundrissplan: 1. OBERGESCHOSS



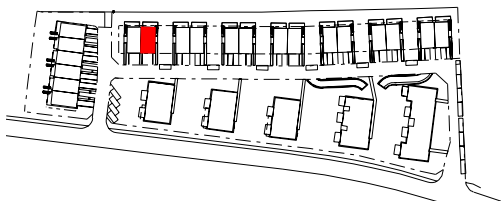
| WOHNFLÄCHE 1.OG | |
|-----------------------|----------------------------|
| Wohnen | 32,88 m ² |
| Flur | 1,31 m ² |
| WC | 1,80 m ² |
| Hauswirtschaftsraum | 6,05 m ² |
| Küche | 12,88 m ² |
| Terrasse 13,38 x 0,25 | = 3,35 m ² |
| GESAMT | 58,07 m² |



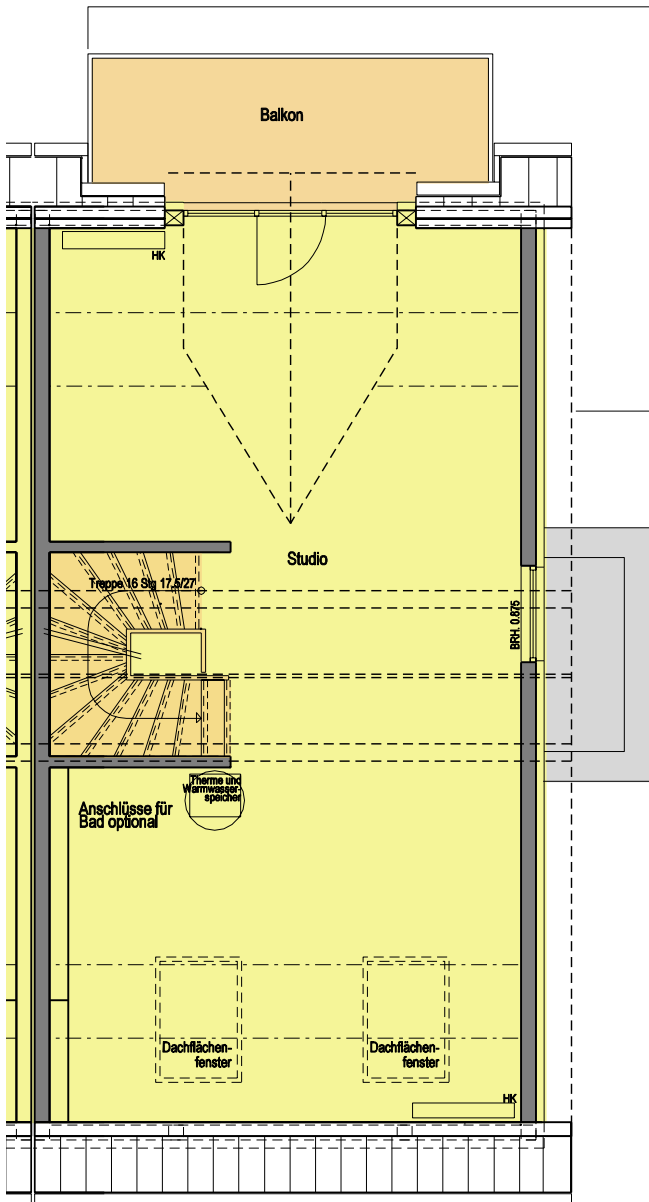
Grundrissplan: 2. OBERGESCHOSS



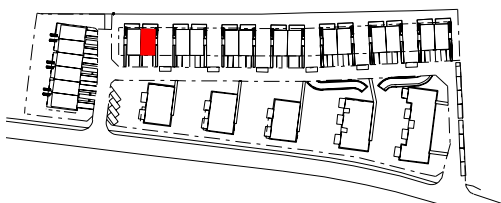
| WOHNFLÄCHE 2.OG | |
|-----------------------------------|----------------------------|
| Schlafen | 20,52 m ² |
| Flur | 4,51 m ² |
| Bad | 7,06 m ² |
| Balkon 7,81 m ² x 0,25 | = 1,95 m ² |
| Kind 1 | 10,64 m ² |
| Kind 2 | 10,74 m ² |
| GESAMT | 55,42 m² |



Grundrissplan: **STUDIO**



WOHNFLÄCHE 3.OG
 Studio 44,01 m²
 Balkon 7,44 m² x 0,25 = 1,86 m²
GESAMT 45,87 m²



Geschäftsführer:

Bernhard Orgler

Hauptsitz:

Eschersheimer Landstraße 295
60320 Frankfurt am Main

Kontakt:

Telefon 069-959676-0

Fax 069-959676-29

E-Mail b.orgler@orgler-group.com